

# Decoding Coal Markets

Give your business the **CoalMint** edge!

---

Your one trusted source for credible market  
intelligence, transparent price assessments, extensive  
data and actionable insights.

## Features

Enabling you develop a holistic industry perspective



### Statistics

Import, export, capacity,  
production, consumption and  
coastal movements



### Prices

Independent, credible and  
transparent spot price assessments  
based on IOSCO principles



### Insights & Intel

Brief intel & in-depth  
market insights



### Tenders

Global & Indian tenders



### Events

Business conferences, webinars  
& networking



### Reports

Industry analyses,  
market data & strategic  
guidance



### Logistics

Vessel Freight,  
Vessel Lineup,  
Railway Movement

# CoalMint Price Assessments



Keep track of price movements of major coal commodities to facilitate risk-free business.

## Coal & Coke

| Category        | Commodities     | Regions  |
|-----------------|-----------------|--|
| Global/Imported | Non Coking Coal | South Africa, Indonesia, Australia, China, Russia, Port Side India, Domestic |
|                 | Coking Coal     | Australia, USA, Russia, Canada, China  |
|                 | PCI             | Australia, Russia  |
|                 | Anthracite      | Russia   |
|                 | Met Coke        | China, Japan, Colombia, Domestic   |
|                 | Pet Coke        | USA, Saudi Arabia  |

| Category | Commodities     | Regions  |
|----------|-----------------|--|
| Domestic | Non Coking Coal | Ex-Wani, Ex-Bilaspur, Ex-Ramgarh, Ex-Raniganj, Coal Index          |
|          | Coking Coal     | Ex-Jharia  |
|          | Met Coke        | Exy-Cuttack, Exy-Surat, Exy-Rajkot                                 |
|          | Pet Coke        | IOCL, BPCL, Nayara Energy, Mangalore Refinery, Reliance Industries |



## Steel & Metallics

| Category  | Commodities  | Regions        |
|-----------|--------------|----------------|
| Domestics | Pellet Index | Raipur         |
|           | Pig Iron     | Durgapur       |
|           | Sponge Iron  | Raipur         |
|           | Billet Index | Raipur         |
|           | Rebar        | Mumbai, Raipur |

## Carbon

| Category        | Commodities        | Regions  |
|-----------------|--------------------|----------|
| Global/Imported | Graphite Electrode | China    |
| Category        | Commodities        | Regions  |
| Domestics       | Graphite Electrode | Ex-India |

## Statistics Coverage

One big platform for accessing all the data pertaining to production, supplies, imports, exports and much more...

| Country  | Import | Export | Production |
|--|--------|--------|------------|
|  Argentina    | Y      | -      | -          |
|  Australia    | -      | Y      | Y          |
|  Bangladesh   | Y      | -      | -          |
|  Brazil       | Y      | -      | -          |
|  Canada       | -      | Y      | Y          |
|  China        | Y      | Y      | Y          |
|  Colombia     | -      | Y      | -          |
|  Germany      | Y      | -      | -          |
|  India        | Y      | -      | Y          |
|  Indonesia    | -      | Y      | Y          |
|  Japan        | Y      | -      | -          |
|  Kazakhstan | -      | Y      | Y          |

| Country   | Import | Export | Production |
|---|--------|--------|------------|
|  Mexico        | -      | -      | Y          |
|  Mongolia      | -      | Y      | Y          |
|  Mozambique    | -      | Y      | -          |
|  Pakistan      | Y      | -      | -          |
|  Russia        | Y      | Y      | Y          |
|  South Africa  | -      | Y      | Y          |
|  South Korea   | Y      | -      | -          |
|  Taiwan        | Y      | -      | -          |
|  Turkey        | Y      | -      | -          |
|  Ukraine       | -      | -      | Y          |
|  United States | -      | Y      | Y          |
|  Vietnam     | -      | -      | Y          |

Y- Data Available

## Coal Stock at Indian Ports

Low-down on coal inventory available at major ports.

## Vessel Line-up Coverage

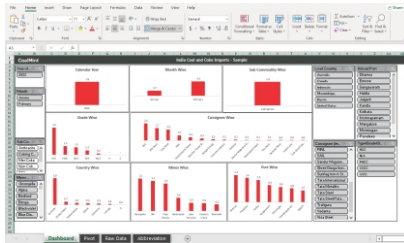
Extensive coverage on vessel movement of major coal trading countries.



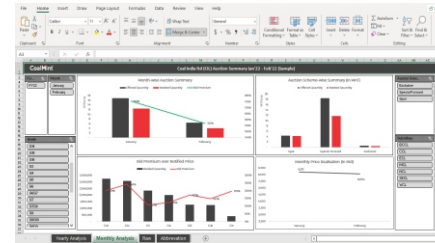
## Additional Data Sets & Dashboard

Coalmint can also help with Additional Data sets which gives you detailed & deeper insights about the coal & coke market.

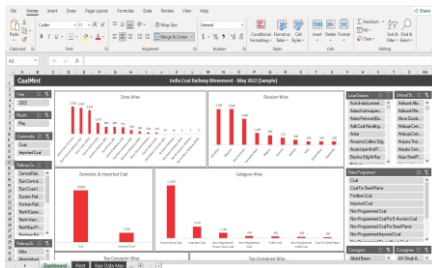
### India Coal & Coke Imports Trade Details



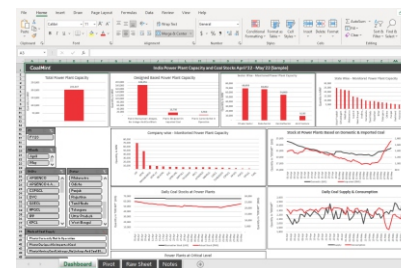
### Coal India Ltd. (CIL) Auction



### India Coal Railway Movement



### India Coal Inventory at Power Plants





## Regular Reports

Comprehensive and in-depth analysis of the various aspects of coal business.

### CoalMint Wires-Daily



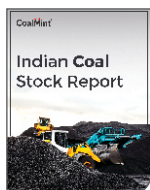
- News Updates from Domestic and International Coal Markets
- Latest Coal Prices - Coking, Non-coking, Pet coke & Anthracite
- Latest Coal Tender Information
- Snapshot of Statistical Data

### India Coal Import Report



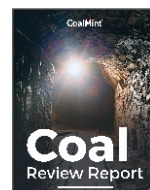
- Weekly comparison of coal imports providing information on:
- Commodity
- Unload Port
- Consignee

### India Coal Stock at Port



- Low-down on coal inventory present at major ports
- Commodity-wise stock
- Weekly comparison of stock at different ports
- Consignee-wise stock details

### Coal Monthly Review



- Monthly Comparison of Indian Coal Import
- International Coal Market and Prices
- Coking Coal Price Trend
- CIL's Coal Production and Offtake

## Special Reports



## Platinum +

- ✓ **All in Platinum +**
- ✓ Download Historical Prices of Last 5 Years in Excel
- ✓ Download Statistics Data of Last 5 Years in Excel
- ✓ Download Historical Special Reports of last 5 years
- ✓ Indian Coal Imports with Trade Details Monthly
- ✓ One Customized Report /Study
- ✓ Price Graph view with Compare Feature
- ✓ Understanding National Coal Index: Methodology And Pricing Concerns Reports
- ✓ Commercial Coal Mining: Hopes and Hurdles Reports
- ✓ Government Makes Coal Washing Non-Mandatory Reports
- ✓ Latest Reforms in Commercial Coal Mining Reports

**₹ On Request**

Valid for Two Users

## Platinum

- ✓ **All in Gold +**
- ✓ Access CIL Subsidiary-wise Auction Result for Current +2 Year
- ✓ Download Dashboard of CIL Subsidiary-wise Auction Result for Current +2 Year
- ✓ Coal Railway Movement Monthly
- ✓ Download Historical Prices for last 2 years in excel
- ✓ Download Statistical Data for last 2 years in excel
- ✓ Download Historical Special Reports of last 2 years
- ✓ CIL Performance Watch Monthly
- ✓ India Coal Inventory at Power Plants Monthly
- ✓ Coal Railway Movement Monthly

**₹ 99,950 | \$ 1,499**

Valid for Single User

## | Packages

### Gold

- ✓ **All in Silver +**
- ✓ Coal Vessel Line-up
- ✓ Coal Vessel Freight
- ✓ Statistical Graphical View
- ✓ India Coal Import Report Weekly
- ✓ India Coal Stock report at Port Weekly

**₹ 44,950 | \$ 699**

### Silver

- ✓ **Prices**
- ✓ Insights
- ✓ Intel
- ✓ Tenders
- ✓ CoalMint Wires Daily Report
- ✓ Coal Monthly Review Report

**₹ 24,950 | \$ 399**

## Our Esteemed Clientele

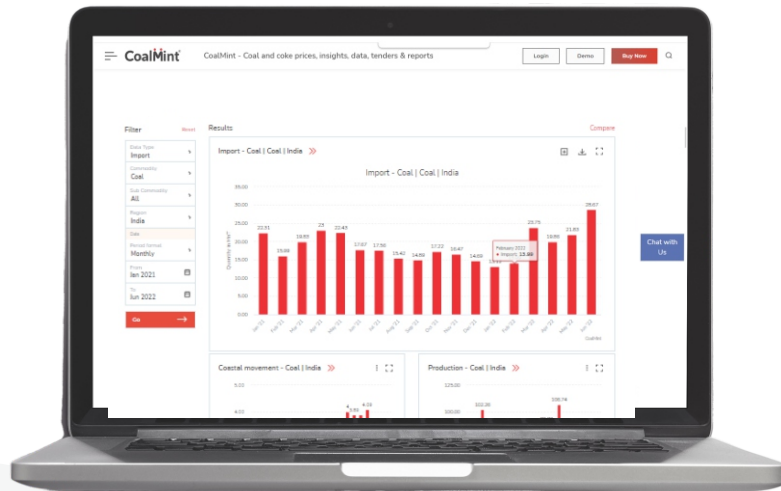
|   |   |  |  |   |   |  |  |
|---|---|--|--|---|---|--|--|
| Hindalco Industries Limited   |                                      | Inspectorate Griffith India Pvt Ltd  | R S MINERALS   | <br>India's Largest Port on the Horizon | Madanlal Steels & Forgings (P) LTD  | <br>"In your prosperity lies our success" | <br>Growing with trust              |
| Saurashtra Fuels  |                                      | RioTinto   | <br>Porbandar Coal Agencies | <br>ENERGY & RESOURCES                 | Goldman Sachs   | <br>PRIVATE LIMITED                       | <br>A Coal India Business Partner   |
|  | Rawmet Commodities  | <br>ADITYA BIRLA<br>SWISS SINGAPORE | Gagan Coal   | <br>TATA INTERNATIONAL                 | <br>Power & Steel Industries Limited | Southern Pacific Energies LLP  | <br>YOUR BIG DATA ANALYTICS PARTNER |
|  | Bhatia Coal   |                                     |                             | <br>bhpbilliton                        |                                      | <br>HAITONG                               | <br>neo metaliks Ltd.               |
|  | <br>GUJARAT FLUORO CHEMICALS LIMITED | <br>INOX GROUP OF COMPANIES         | RPM Business Services Pvt. Ltd.  | <br>Cement Manufacturers' Association    | Anupam Fuel Pvt Ltd   | <br>Mitsubishi Corporation                | Wills Shipping Pvt Ltd   |
| Gujarat Fluorochemicals Limited   | SBC Minerals (P) Ltd  |                                     | Abhijeet Ferrotech Limited   | <br>TOTAL CONTROL                       | Majolica Global USA LLC   | <br>ASHAPURA<br>PEROCCLAY LIMITED         | <br>Kotak Securities                |
| Mugma Coke Oven (Pvt) Ltd   | <br>Agrawal Coal Corporation         | Wills Shipping Pvt Ltd   | MOL Bulk Shipping (India) Pvt. Ltd.  |   | Altrade Minerals  | Tradecon Shipping and Logistic Pvt. Ltd.   | <br>Edelweiss                       |
| ITOCHU India Pvt Ltd.   | <br>HINDALCO                       | Ambit Capital  | Shri Kalindi Coal Co   | <br>vedanta                           | Investor of Stock Market  | <br>High performance. Delivered.         | GLENCORE   |

and many more.....

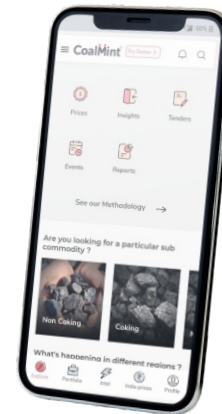


Data. Insights. Decisions.

Get in-depth information on Indian & global coal and coke markets.



Website



Mobile App

Mobile App



**Contact us**

Shubhenshu Dey  
info@coalmint.com  
+91 87705 91840



**Data.**  
**Insights.**  
**Decisions.**

 [www.coalmint.com](http://www.coalmint.com)

 [info@coalmint.com](mailto:info@coalmint.com)

 +91-97702 58888